

neno<sup>®</sup>  
beauty

ZORA MINI

AI SMART HAIR DRYER  
WITH PLASMA TECHNOLOGY

FAST *drying*

*Exclusive Series*



# Lightweight, compact and intelligently designed

Take care of your everyday comfort with the new Zora Mini hair dryer from Neno Beauty. Its lightweight, compact design makes daily drying easier, while smart settings help adjust the device to the needs of your hair. Neno Beauty Zora Mini supports your everyday hair care routine and lets you enjoy beautifully looking hair without time-consuming styling. AI mode, plasma technology, and alternating temperature mode help make drying more comfortable, reduce frizz, and support a smooth, glossy finish. With 5 temperature levels and 2 airflow speeds, you can easily adjust the dryer to suit your hair type and styling needs.

The perfect temperature,  
a perfect result

5 temperature  
settings

Plasma technology

Variable temperature mode

Magnetic 360°  
concentrating nozzle

2 fan  
speed settings

Precise temperature  
control

AI mode, intelligent  
distance sensor

Light ring

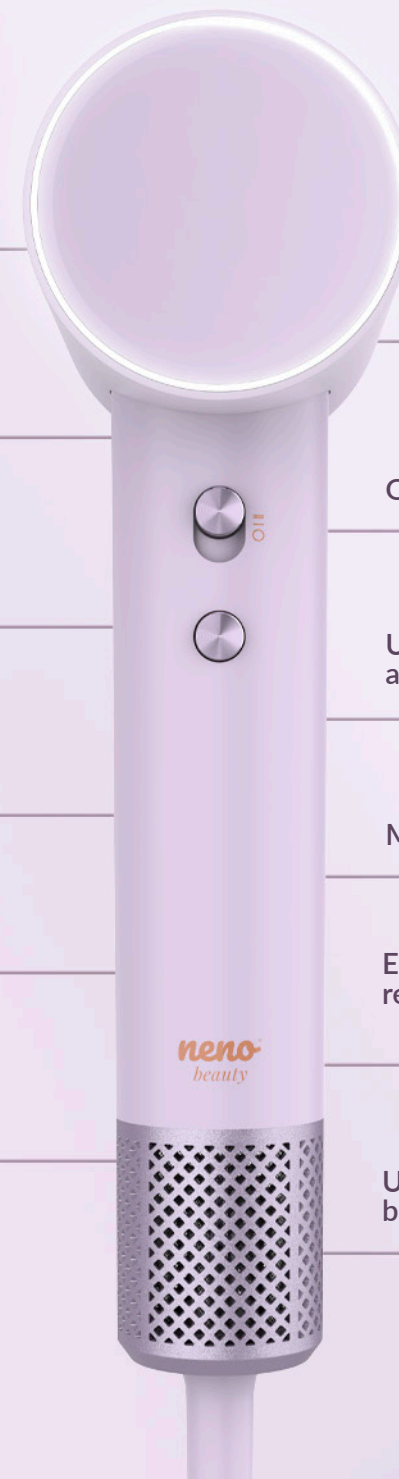
Quiet operation

Ultra-lightweight  
and compact design

Memory function

Easy to clean thanks to the  
removable air filter cover

Ultra-fast  
brushless motor



*Exclusive Series*

# *Smooth, hydrated hair thanks to **plasma technology***

The plasma technology used in the Neno Beauty Zora Mini smart hair dryer works with two types of ions that support visible results during everyday styling. Positive ions help maintain hair hydration, making strands look healthier and feel softer to the touch. Negative ions smooth the hair, reduce frizz and make it easier to control. The result? Hair that looks soft, sleek and well-groomed, without feeling dry.



# *Turn it on and style without resetting*

The memory function in Neno Beauty Zora Mini remembers the last selected temperature. The next time you use the dryer, it is ready to work with the same setting, without the need to adjust the heat level again. Just turn it on and start styling. It is a convenient everyday solution that saves time and makes it easy to return to the temperature best suited to your hair.



*Style more comfortably  
with clear temperature  
indicators*



Neno Beauty Zora Mini offers 5 temperature modes and 2 airflow speeds, so you can easily adjust drying to your needs and hair type. Each mode uses a different temperature, and the current setting is indicated by a coloured light ring. Blue indicates cool air close to room temperature, yellow shows warm airflow, and red indicates hot air. In alternating temperature mode, the colours of the ring change automatically, showing the current operating mode of the device. White indicates AI mode, which maintains a constant temperature of around 47°C regardless of the distance between the dryer and the head, providing greater comfort, safety and control during everyday styling.

# *AI mode – gentle drying loved by children and parents*

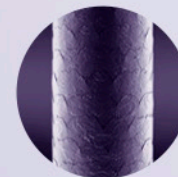


AI mode in the Zora Mini smart hair dryer supports gentler drying by automatically maintaining the right airflow temperature. The built-in sensor monitors the temperature and keeps it at a constant level of around 47°C, regardless of the distance between the dryer and the head. This helps protect the hair and scalp from overheating, making everyday styling more comfortable and safer for the strands. It is especially important for fine, delicate hair that requires gentler care. This practical solution helps keep hair soft, smooth and healthy-looking. AI mode does not work when the concentrator nozzle is attached.

# *Perfect drying for every hair type*

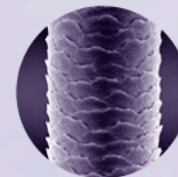
The new hair dryer from Neno Beauty works well for hair of every porosity, helping you adjust drying to individual needs. For high-porosity hair, it helps reduce frizz with cool airflow, making strands easier to tame and smooth. For low-porosity hair, it helps maintain the right level of hydration thanks to plasma technology with positive ions, without drying the hair out. For medium-porosity hair, AI mode helps add smoothness, softness and a healthy shine, making the hairstyle look radiant after every wash. With the Zora Mini smart hair dryer, you no longer need to worry about humidity or changing weather. Your hair can look smoother, more cared for and easier to control, no matter the conditions.

Results tailored to your hair type:



## ***Low-porosity***

Positive-ion plasma technology  
Shiny hair without static



## ***Średnioporowate***

AI Mode  
A healthy shine and softness after every  
blow-dry



## ***High-porosity***

Cool air  
Smooth strands without frizz



# *Keep your dryer clean with ease*

Take care of your dryer's performance without effort. The Neno Beauty Zora Mini filter has a removable magnetic cover, giving you quick access and making it easy to remove accumulated dirt. Simply wipe it with a cloth to keep the device clean and enjoy comfortable drying every day.



*Exclusive Series*

**neno**<sup>®</sup>  
beauty



## *Precise styling with a 360° nozzle*

The 360° concentrator nozzle lets you direct the airflow exactly where you need it, making it easier to smooth strands, shape your hairstyle and achieve the desired look. The rotating nozzle gives you more freedom while drying, whether you are styling hair at the roots, shaping the ends or smoothing individual sections. The rotating concentrator nozzle helps you achieve a more polished result without unnecessary effort.

*Exclusive Series*

# *Quieter operation, greater comfort*

Neno Beauty Zora Mini is equipped with a brushless motor that ensures efficient yet quieter operation. With a noise level below 65 dB, everyday hair drying becomes more comfortable and less disruptive for other household members. You can style your hair at any time without disturbing the peace around you. It is greater everyday comfort – both for you and for everyone at home.

# Quieter

80–90 dB

<65 dB

*Most standard  
hair dryers*

*Neno Beauty  
Zora Mini*

270g



*Lightness you will feel  
from the first use*

The Neno Beauty Zora Mini smart hair dryer weighs only 270 g, so it sits comfortably in the hand and does not strain the wrist while drying. Its lightweight design makes everyday styling easier, especially when you want to model your hair precisely or use the device for a longer period of time. Thanks to its compact weight, the dryer is comfortable to use, easy to store and practical for travel.



## *Convenient for travel*

*Its compact design means the dryer easily fits even into a small suitcase, without taking up valuable luggage space. You can take it with you on a weekend trip, holiday or business journey and enjoy comfortable styling whenever you need it. The set also includes a practical pouch that makes storage easier and helps protect the dryer from scratches.*



*Drying  
tailored  
to your needs*

Neno Beauty Zora Mini offers functions that make everyday hair care and styling easier. AI mode, intelligent temperature control and various operating settings help adjust drying to your needs. Whether you want quick drying, gentler care or precise styling, the device allows you to use it comfortably, intuitively and with greater care for the condition of your hair and scalp.

# Hair care series from Neno Beauty

The Neno Beauty hair care series is a line of modern devices created for conscious hair care and everyday styling. The products combine functionality, ease of use and modern technologies that support hair protection, making it easier to care for its condition and appearance every day. It is a great choice for people who want to look after their hair in a thoughtful way – effectively, gently and with greater attention to its needs.



# nenob<sup>®</sup>

## beauty

### ZORA MINI

#### TECHNICAL SPECIFICATIONS

Power supply:	220-240 V 50/60 Hz
Power:	1100 W
Cable length:	1.7 m
Cool air flow:	Yes
Number of fan speed settings:	2
Number of temperature modes:	5
Motor speed:	130,000 rpm
Dimensions (unit):	6 × 7.6 × 22 cm
Weight (unit):	270 g
Package contents:	Hairdryer, Magnetic concentrator nozzle, Storage pouch, User manual
EAN code:	5902479679792
PN code:	NEN-DOM-SU004
Contact:	Tel.: 731 594 301; email: info@nenob.pl
Manufacturer:	KGK Trend sp. z o.o. ul. Ujastek 5B, 31-752 Kraków



AWARDS FOR  
KGK TREND



The owner of the Neno brand:

If you're not sure which product to choose, need help or support, or have any questions for our experts, please call or email Neno's Customer Support Centre directly. Helpline: 731 594 301 mail: info@nenob.pl